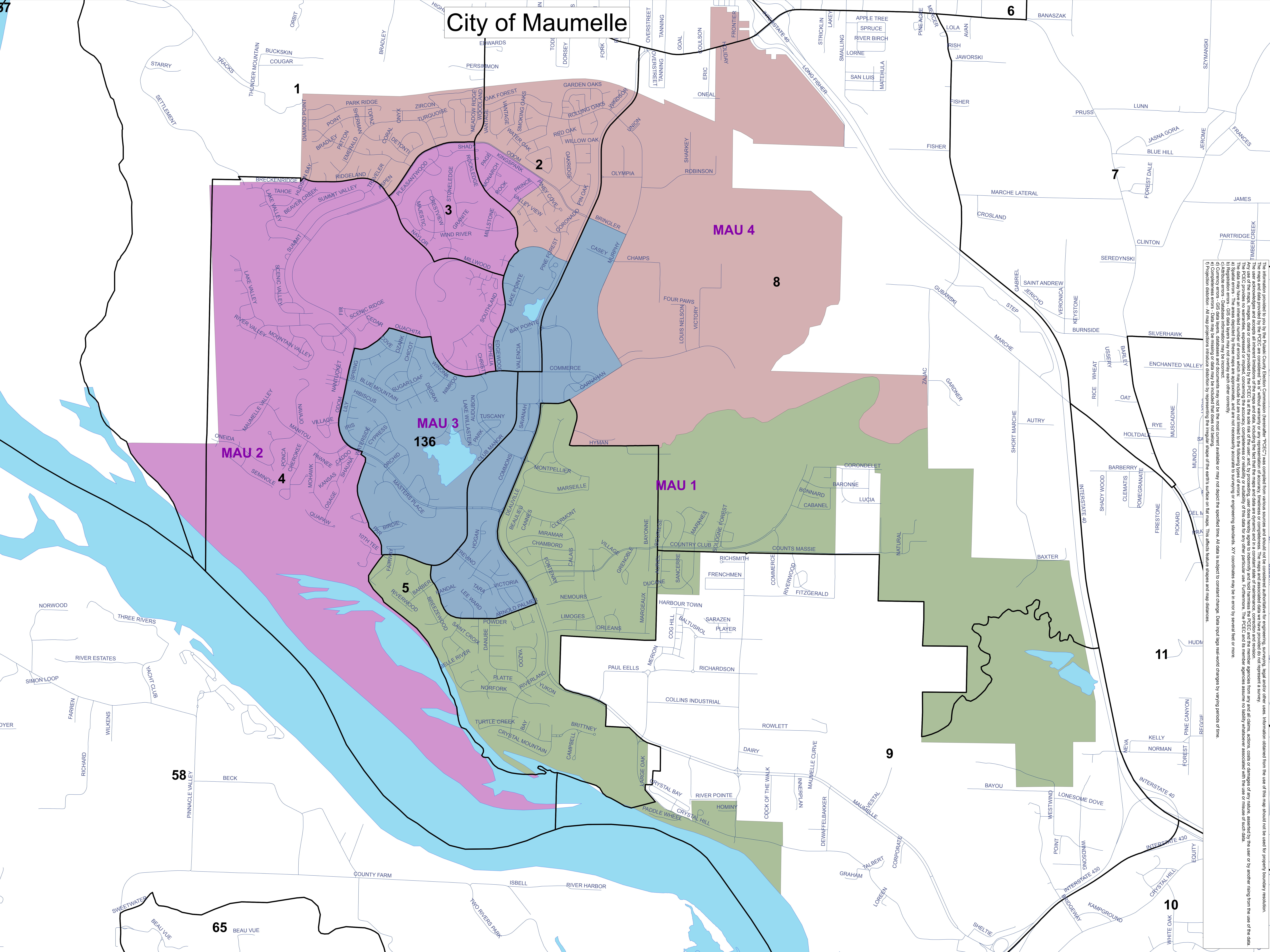


City of Maumelle



The information provided to you by the Pulaski County Election Commission (hereinafter "PCEC") was compiled from various sources and should not be considered authoritative for engineering, surveying, legal and/or other uses. Information obtained from the use of this map should not be used for property boundary resolution.

The maps and data provided by the PCEC are considered "as is" without warranty or any representation of accuracy, timeliness or completeness. The maps and associated data we have provided do not represent a survey.

Any use of the maps, images, data or content provided by the PCEC is at the sole risk of the user, and, by proceeding, user does hereby agree to indemnify and hold harmless the PCEC and its member agencies from any and all claims, actions, costs or damages of any nature, asserted by the user or by another arising from the use of the data.

The PCEC provides no warranties, expressed or implied, concerning the accuracy, completeness or reliability of the data for any other particular use. Furthermore, the PCEC and its member agencies assume no liability whatsoever associated with the use or misuse of such data.

The data may have an unlisted number of errors which may include but are not limited to the following types of errors:

- a) Attribution errors - Database information may be incorrect.
- b) Registration errors - GIS data layers may not overlay each other correctly.
- c) Attribute errors - Database information may be incorrect.
- d) Complete errors - Data may be missing or data may be included that does not belong.
- e) Projection errors - All map projections introduce distortion by representing the irregular shape of the earth's surface on flat maps. This affects feature shapes and map distances.
- f) Projection distortion - All map projections introduce distortion by representing the irregular shape of the earth's surface on flat maps. This affects feature shapes and map distances.

1) Projection errors - All map projections introduce distortion by representing the irregular shape of the earth's surface on flat maps. This affects feature shapes and map distances.